

BUILDING NO. 7.

BUILDING NAME: POINSETTA APARTMENTS

LOCATION: 5528 So. Hyde Park Boulevard CITY: Chicago,

COUNTY: Cook STATE: Illinois ZIP:

OWNER: Graff & Check Realty

ADDRESS: 1617 East 55th Street CITY: Chicago,

STATE: Illinois ZIP: 60615

LOCATION OF LEGAL DESCRIPTION: Cook County Recorder of Deeds  
118 N. Clark Street, Chicago, IL

VERBAL BOUNDARY DESCRIPTION: Located on the west side of South Hyde Park Boulevard between East 55th and East 56th Streets just north of the Broadview Hotel. (continued below)

APPROXIMATE ACREAGE: 0.17 DATE OF CONSTRUCTION: 1929

ARCHITECT AND/OR BUILDER

DESCRIPTION:

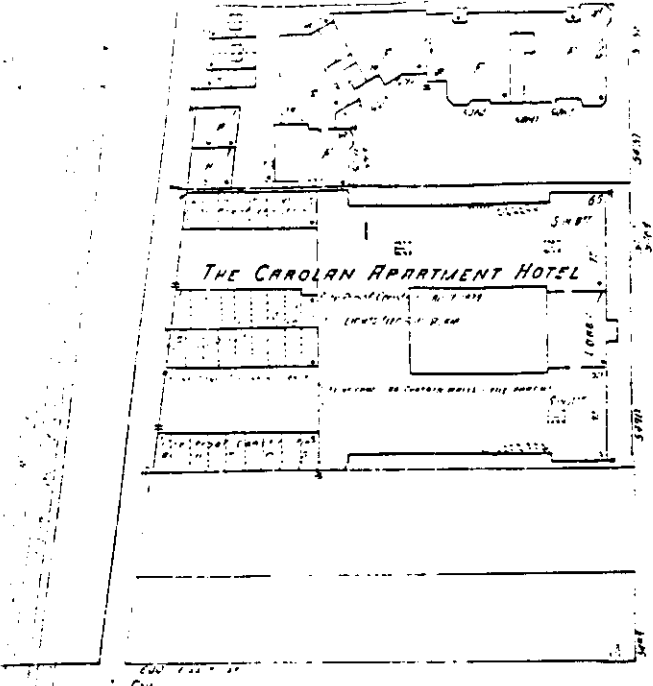
Standing twelve stories, this buff brick and terra cotta trimmed building exhibits characteristics of the Spanish Colonial Revival style. It adjoins the Broadview Hotel on the south and has a 50' frontage on South Hyde Park Boulevard. There are five applied pilasters on the facade, all of which project above the cornice. Other Spanish Colonial features include: green tile coping at each end of the facade at the second level, vertical roped terra cotta trim flanking the windows at the first two levels, terra cotta medallions in the middle of the spandrels under the wood casement windows, and wrought iron grillwork at the third level windows. The main entry is off center. Of particular interest are the two story, terra cotta frames for the rows of grouped (three) casement windows at the first and second levels, with a rococo heading and a green faux marble panel in each spandrel.

The Poinsetta is the smallest of the apartment hotels in the thematic group with 76 apartments. (34 1 BR and 41 Studio)

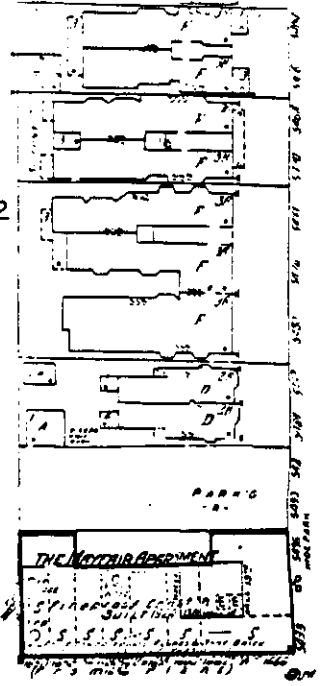
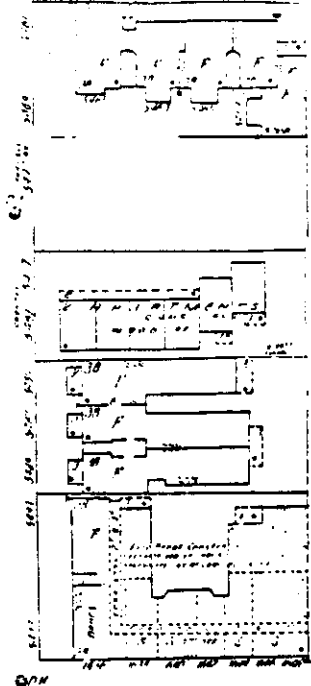
SIGNIFICANCE:

The Poinsetta's significance lies in its masterful application of terra cotta ornamentation. The only one of the Hyde Park Apartment Hotels in this group designed in the Spanish Colonial Revival style, the Poinsetta is one of the finest examples of the use of the Chicago based terra cotta industry's products including: roped trim flanking the windows, enriched cornice window heads with medallions, and (as mentioned above) rare green, faux marble panels in the second floor window spandrels. The decoration on the lower levels is so eye-catching that a viewer rarely realizes that the building is twelve stories high.

VERBAL BOUNDARY DESCRIPTION: Beginning at a point 310 feet north of and 33 feet west of a point at the center of the intersection of Hyde Park Boulevard and East 56th Street running 155 feet west, then 114 feet north, then 155 feet east, then 114 feet south to original point.



AV.

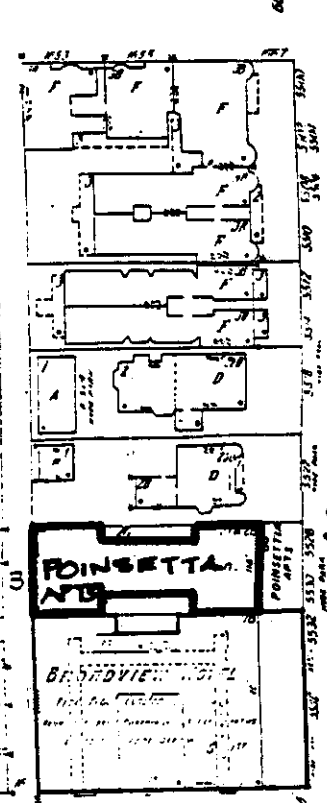
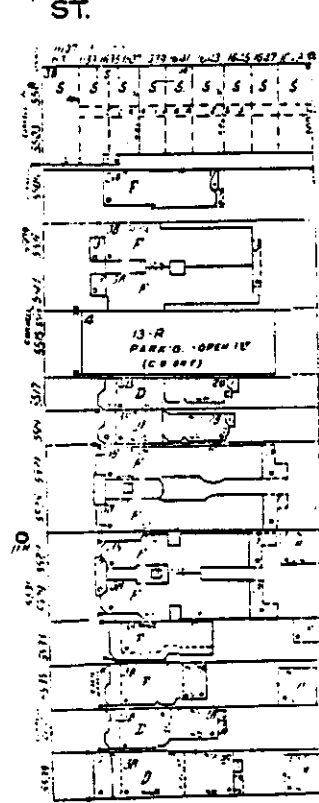
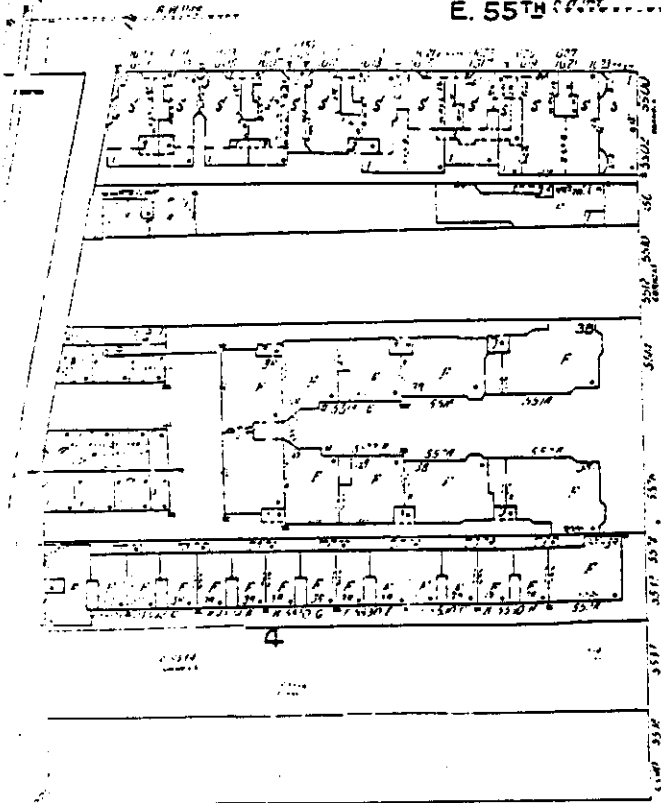


RIVID

E. 55TH ST.

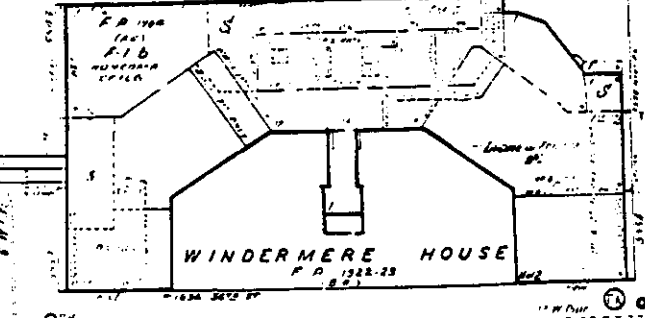
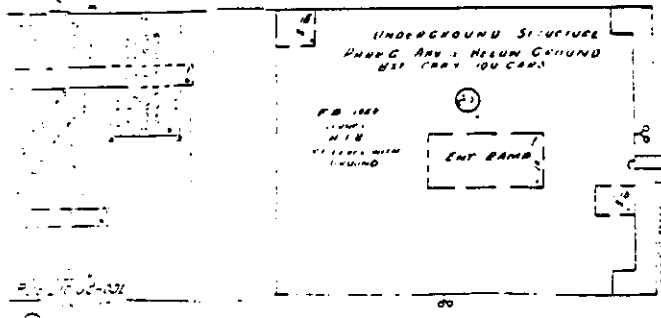
ST.

CORNELL



INVEST PARK

7.



E. 56TH

ST.

Scale of Feet

JACKSON PARK



IN REPLY REFER TO:

# United States Department of the Interior

NATIONAL PARK SERVICE  
P.O. BOX 37127  
WASHINGTON, D.C. 20013-7127

RECEIVED

JUN 6 1986

HISTORIC PRESERVATION

MAY 23 1986

The Director of the National Park Service is pleased to inform you that the following properties have been entered in the National Register of Historic Places beginning May 11, 1986 and ending May 17, 1986. For further information call (202) 343-9552.

STATE, County, Vicinity, Property, Address, (Date Listed)

ALABAMA, Calhoun County, Jacksonville, Downtown Jacksonville Historic District, Roughly bounded by College, Thomas, Coffee, and Spring Sts. (05/13/86)

ALABAMA, Limestone County, Athens, Houston, Governor George Smith, House, 101 N. Houston St. (05/15/86)

ALABAMA, Mobile County, Mobile, Paterson House, 1673 Government St. (05/15/86)

ALABAMA, Tuscaloosa County, Tuscaloosa, Downtown Tuscaloosa Historic District, Roughly bounded by Fourth St., Twenty-second Ave., Seventh St., and Twenty-fifth Ave. (05/15/86)

ARIZONA, Coconino County, Grand Canyon vicinity, Trans-Canyon Telephone Line, Grand Canyon National Park, Grand Canyon along Bright Angel and North Kaibab Trails from South Rim to Roaring Springs and South Kaibab Trail to Tipoff (05/13/86)

HAWAII, Hawaii County, Bobcat Trail Habitation Cave (50-10-30-5004) (05/15/86)

ILLINOIS, Cook County, Barrington, Barrington Historic District, Roughly bounded by Dundee, W. Coolidge, E. Hillside, and S. Grove Aves., and S. Hough, E. Lake, Main, N. Garfield, and E. Applebee Sts. (also in Lake County) (05/16/86)

ILLINOIS, Cook County, Chicago, Chicago Beach Hotel (Hyde Park Apartment Hotels TR), 5100-5110 S. Cornell Ave. (05/14/86)

ILLINOIS, Cook County, Chicago, East Park Towers (Hyde Park Apartment Hotels TR), 5236-5252 S. Hyde Park Blvd. (05/14/86)

ILLINOIS, Cook County, Chicago, Flamingo-On-The-Lake Apartments (Hyde Park Apartment Hotels TR), 5500-5520 S. Shore Dr. (05/14/86)

ILLINOIS, Cook County, Chicago, Hotel Del Prado (Hyde Park Apartment Hotels TR), 5307 S. Hyde Park Blvd. (05/14/86)

ILLINOIS, Cook County, Chicago, Hyde Park-Kenwood Historic District (Boundary Increase), 825-833 E. Fifty-second St. (05/16/86)

ILLINOIS, Cook County, Chicago, Lakeview Historic District (Boundary Increase), 701, 705, 711, 715-717, 721, 733-735, 737, and 739 Belmont, 3162 & 3164 Orchard and 3171 Halsted (05/16/86)

ILLINOIS, Cook County, Chicago, Mayfair Apartments (Hyde Park Apartment Hotels TR), 1650-1666 E. Fifty-sixth St. (05/14/86)

ILLINOIS, Cook County, Chicago, Poinsetta Apartments (Hyde Park Apartment Hotels TR), 5528 S. Hyde Park Blvd. (05/14/86)

ILLINOIS, Cook County, Chicago, Shoreland Hotel (Hyde Park Apartment Hotels TR), 5450-5484 S. Shore Dr. (05/14/86)

ILLINOIS, Vermilion County, Danville, Stone Arch Bridge, 760-800 E. Main St. (05/16/86)

KENTUCKY, Campbell County, Fort Thomas, Fort Thomas Military Reservation District, Roughly bounded by Pearson, Alexander, and Cochran Aves., River Rd., and S. Fort Thomas Ave. (05/15/86)